



POWER WD 80.2 P CF

Wet & Dry vacuum cleaners with integrated discharging pump

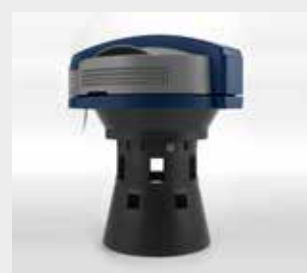
PRODUCT IDENTIFICATION

	TYPE	REF. NO.
	POWER WD 80.2 P CF	I4481210001
	POWER WD 80.2 P CF	I4488611950

High efficiency, trolley mounted wet & dry vacuum unit, equipped with an integrated discharging pump for continuous suction/dumping. This unique machine's performances are very suitable for civil/emergency service, contract cleaners and fire brigades. Can be used also as a normal dry or wet & dry vacuum cleaner.



Discharging pump



Filter cage



Draining device



Exhaust air filter

TECHNICAL DATA

Max power rating	W	2500
Rated power (nominal power)	W	2200
Container capacity	l	80
Useful capacity	l	42
Air flow rate	l/s	142
Vacuum	mbar	225
Sound level	db(A)	62
Power Supply Cable	m	10
Weight (without accessories)	Kg	29
Dimensions	mm	620x1115x960
Discharging pump:		
• Water flow	l/min	max 220
• Max power	W	370
• Lift performance	max 8 m (flow 20 l/min)	

STANDARD ACCESSORIES

TYPE	REF. NO.
Flexible hose 2,5 m	6010500
Suction tube "S"	2511600
Squeegee tool	6010011
Crevice tool	2511610
Nylon protection filter	3001009